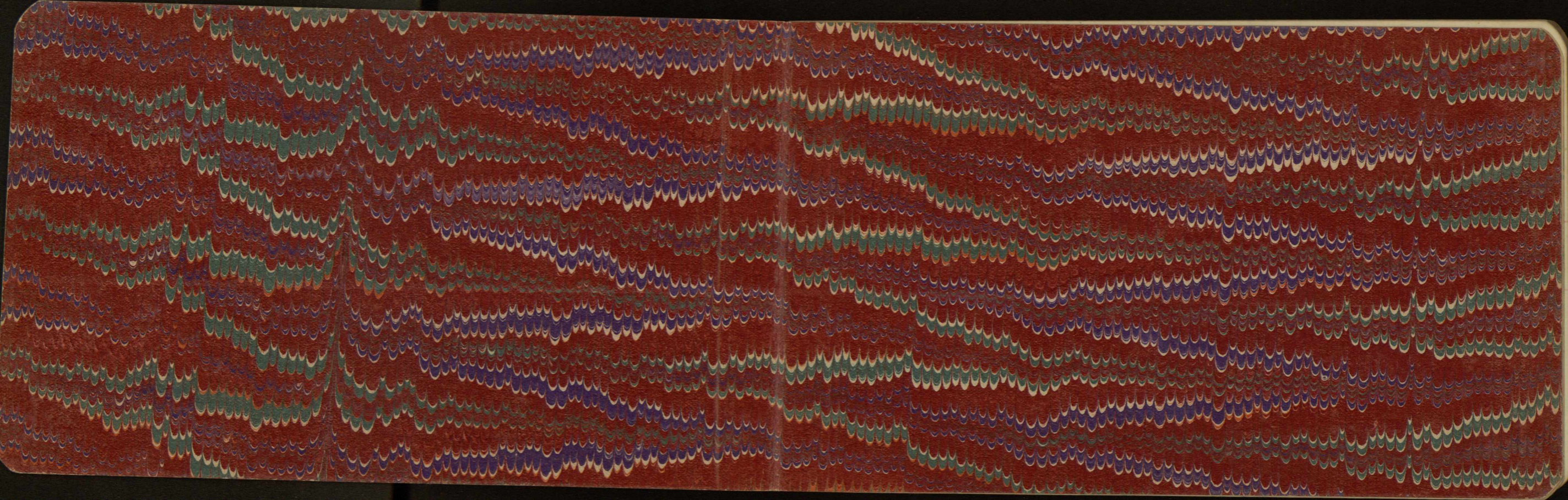


The image shows the front cover of an antique book. The cover is decorated with a traditional marbled paper pattern, often called 'stone' or 'shell' marbling, featuring repeating, overlapping, teardrop-shaped motifs in shades of red, blue, green, and cream. The spine of the book, visible on the right side, is bound in a dark red, textured leather. A small, rectangular, off-white paper label is affixed to the upper portion of the cover, displaying the number '102' in a large, bold, black, serif font. The book shows signs of age, with some wear and scuffing on the marbled surface and the leather spine.

102



No 102

R.S. 14.



RAILWAY DEPARTMENT, N.S.W.

EXISTING LINES.

FIELD BOOK

OF THE SURVEY OF

Duncan bygon to Leambury

Geo. Innes Hall

Surveyor.

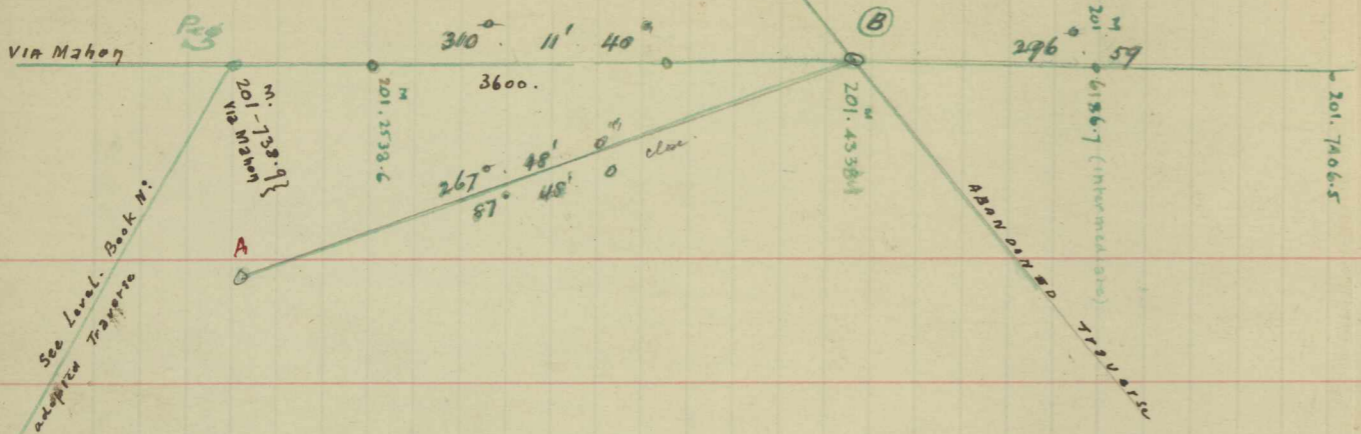
6/16/10

SYDNEY:

WILLIAM APPEGATE GULLICK, GOVERNMENT PRINTER.

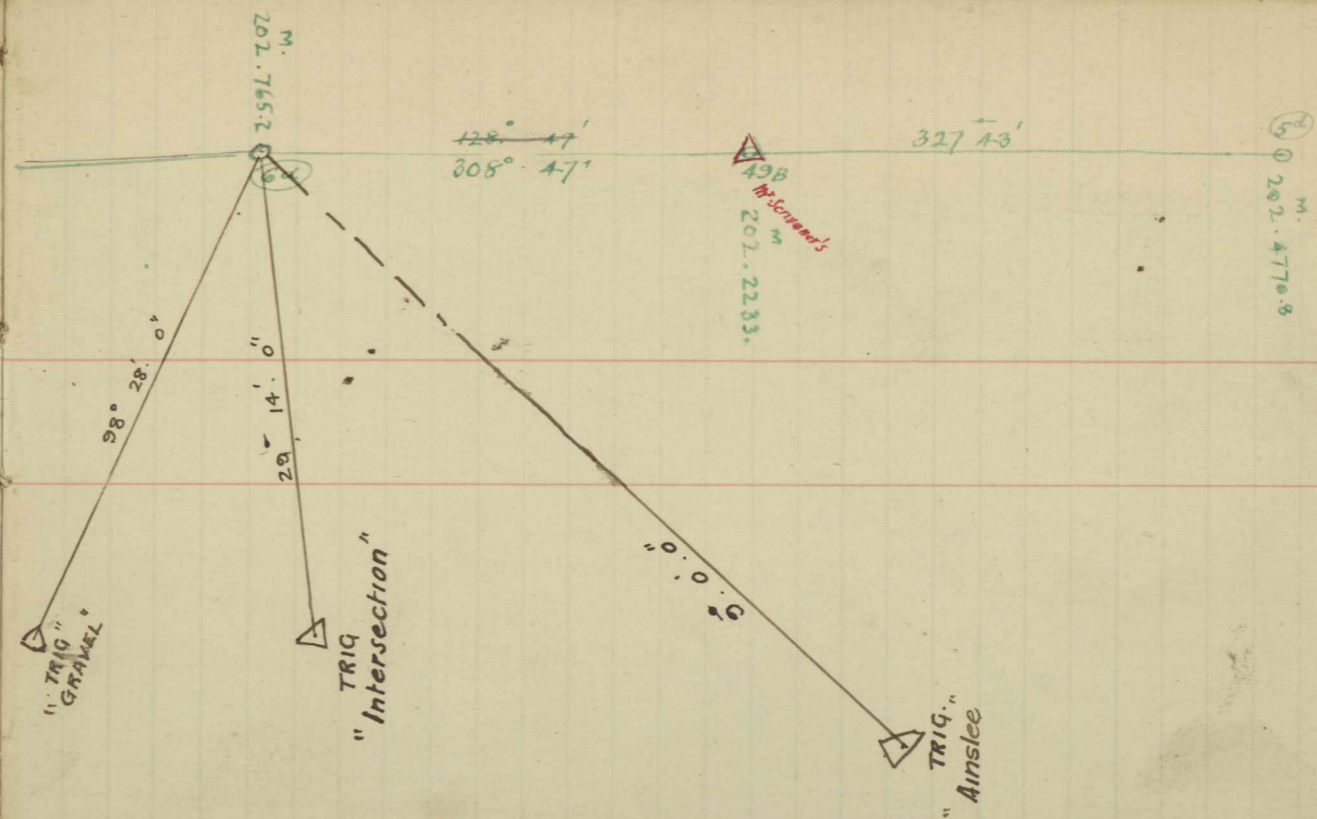
1909.

PRELIMINARY TRAVERSE

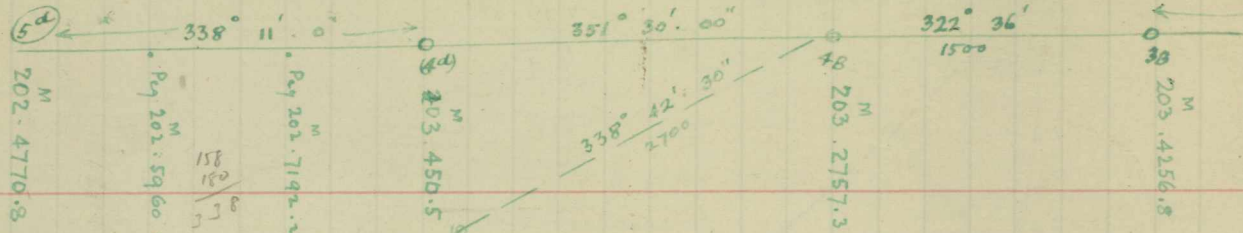


$$\begin{array}{r} 43,38.1 \\ 7,38.6 \\ \hline 36. \end{array}$$

$$\begin{array}{r} 6186.7 \\ 4338.1 \\ \hline 4427.1 \end{array}$$

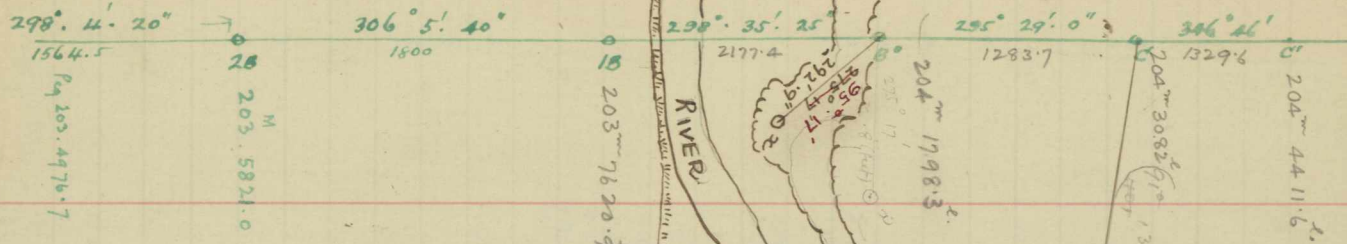


$$\begin{array}{r} 202.4770.8 \\ \hline \end{array}$$



M
 202.4770.8
 M
 203.450.5
 M
 203.2757.3
 M
 203.4256.8
 M
 203.5821.0
 M
 203.7620.9
 M
 204.4411.6

Rottenbury Trig
 Ainslie Trig
 158
 151
 17
 14
 1378.2
 151



M
 1564.5
 M
 203.5821.0
 M
 1800
 M
 203.7620.9
 M
 2177.4
 M
 1998.3
 M
 1283.7
 M
 204.3082.9
 M
 1329.6
 M
 204.4411.6

